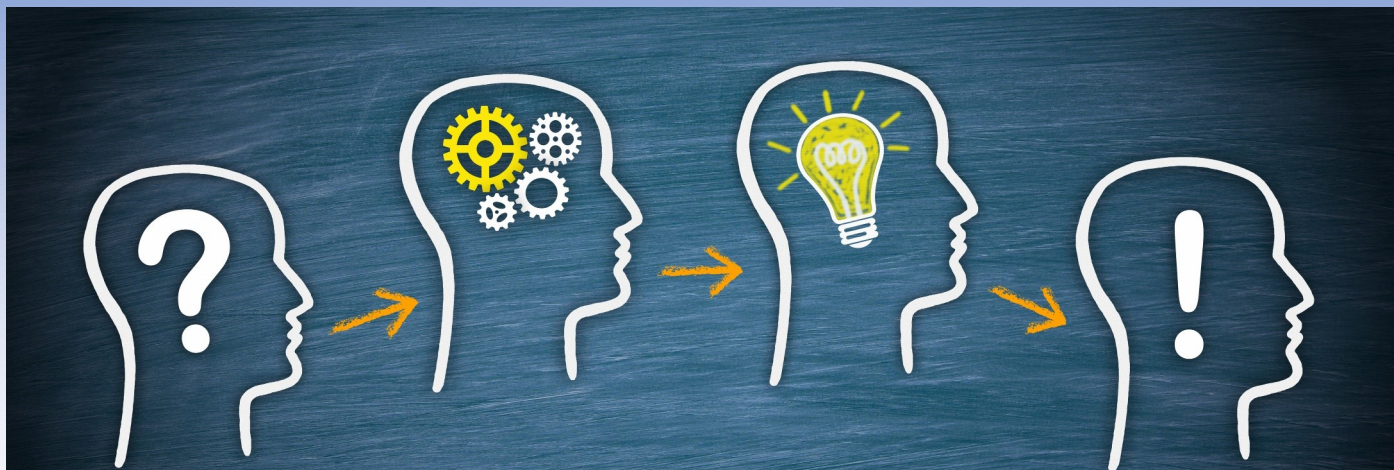




Co-funded by  
the European Union



Erasmus+ KA2 strategic partnership—Project No. 2021-1-RO01-KA220-VET-000034746



## BEACON—BE A COMPETENCE NOW

NEWSLETTER N.2—NOVEMBER –DECEMBER 2022

### The Teacher and Staff Training in Porto

In September 2022 **Beacon** Project Partners gathered in **Porto, Portugal**, hosted by the Portuguese Team made of **NEWTIE**, responsible for the **technological side** of the project, Escola Artística e Profissional **ARVORE**, **textile sector VET school**, and by **CITEVE**, **technological and research centre** for sustainable and digital textile sector in Portugal. Partners were involved in a trial test of the **Beacon Platform**, simulating an

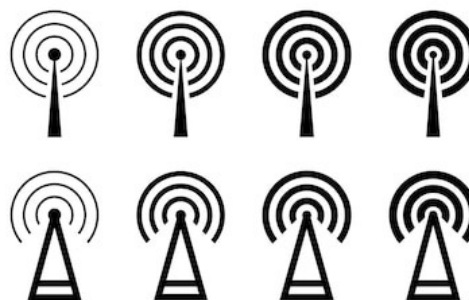
**incidental learning path** through the use of **Beacon Hardware**, a set of at least 3 devices suitably **installed in the school lab** and through **mobile-phone** or tablet

**notifications** sent to users via the Beacon free **application**. Both teachers and business technicians took part in the training.



### Target Groups

- ◆ VET students, especially those at risk of school failure or drop-off
- ◆ VET teachers and trainers
- ◆ Corporate managers & technicians from the EU strategic manufacturing & industrial sectors

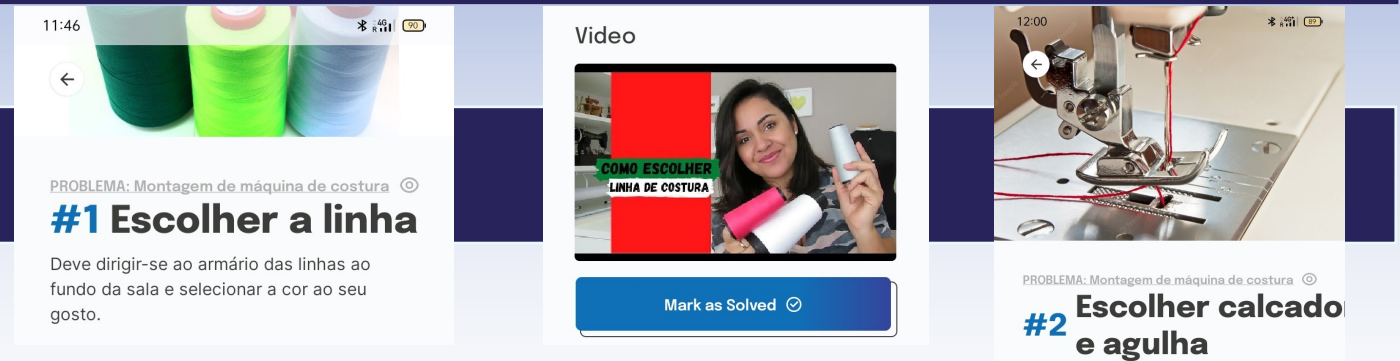


SIGNAL ICON

## What are BEACONS?

Beacons are **hardware** devices, just a few centimetres in size, equipped with **low-cost, low-energy BLE (Bluetooth Low Energy)** technology, capable of **detecting** the presence of **other devices** at a short **distance**, and of sending **push notifications** to enabled devices through a **mobile application** (for smartphones or tablets) and thanks to a **software platform** that hosts and manages the content of the information to be transmitted (known as **CMS-Content Management System**).

The project envisages the installation of **2-5 Beacons** in **school laboratories** or **workplaces**, to allow the **simulation** of an **unpredicted failure** or **problem** in an **industrial** procedure, by sending **notifications from the Beacons to the students'** mobile devices, which will be guided in the active **search for the solution** through the succession of notifications.



11:46

PROBLEMA: Montagem de máquina de costura

### #1 Escolher a linha

Deve dirigir-se ao armário das linhas ao fundo da sala e selecionar a cor ao seu gosto.

Video

COMO ESCOLHER LINHA DE COSTURA

Mark as Solved

12:00

PROBLEMA: Montagem de máquina de costura

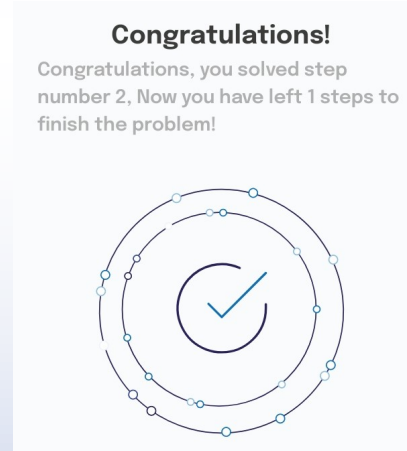
### #2 Escolher calcado e agulha

## How do Beacons work?

When students are in the **school lab**, they get a **notification** on their phones, instructing them about a **specific task** they are assigned. Once the task is performed, they **mark it as "solved"** and the system leads them to the **second step** with further instructions to apply, including help links.

When all the steps are mark as "solved", students get a message informing them they **passed** all the **steps** and that the **problem** is finally **solved**. In the pictures, examples are shown about a **textile sector problem** about properly **preparing** the **sewing machinery** in the **school lab**, but the **incidental learning methodology** can be applied to **any industrial sector**.

All partners will therefore work on **domain-specific problems** which are relevant for the **digitalization** and **sustainability** of their sector.



**Congratulations!**

Congratulations, you solved step number 2, Now you have left 1 steps to finish the problem!

## Coming Next:

In November 2022 the **Beacon Digital Integrated System**, made of both a **CMS platform** and of a **mobile application** will be available for partners' use. Once the Beacon platform is filled with training contents, partners will gather for an online meeting in **January 2023** to plan the **work-based experimentations** at school.



**LUDOR ENGINEERING**

**CISITA PARMA**

**Liceul Teoretic de Informatică „GRIGORE MOISIL” Iași**

**NEWTIE Technologies Innovation Education**

**FOOD FARM 4.0**

**arvore escola artística e profesional**

**citeve TECNOLOGIA TÊXTIL**

**cpiip Corona de Aragón**

**aitiip centro tecnológico**